

COLLABORATE® Pro 300 brings traditional SIP/H.323 videoconferencing, Skype for Business, Spontania cloud web conferencing and multi-user wireless presentation into a single appliance all with consistent user interface and user experience.

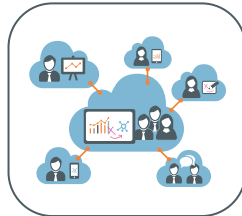
The system allows teams to effectively collaborate no matter where they are located.



## Traditional and Cloud Video Collaboration

Multi-site collaboration with both traditional SIP/H.323 videoconferencing and cloud video collaboration in a single appliance

- + SIP/H.323 videoconferencing with data sharing through wireless or USB
- + Skype for Business with contacts, presence, P2P and multi-party calls (voice switching mode), join meeting, wireless screen sharing, dual display
- + Spontania video collaboration meeting with up to 25 participants joining from PC, mobile devices, and room endpoints



## In-room Wireless Presentation

Single-site collaboration with ability to stream content, video, whiteboard, and annotations from your PC onto displays wirelessly.

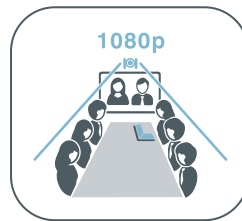
- + Wireless presentations from your device at 1080p resolution
- + Video streaming from a laptop to meeting room displays with audio coming through the room's sound system
- + Interactive whiteboard and annotation on shared contents - *Available soon*



## Enterprise-Grade Video

ClearOne UNITE® USB PTZ camera guarantees superior video quality for more natural video collaborations.

- + Full HD video quality with 1080p 30fps
- + 12x Optical zoom for close-up views of objects and whiteboard details with absolute clarity
- + 73° wide-angle view to capture all participants in the room
- + UVC control for camera zoom, pan, and tilt functions



## Professional quality audio

ClearOne CHAT 150C speakerphone, with its market-leading HDConference™ audio processing, is designed for group collaboration.

- + Three built-in microphones create array with 360° audio pickup
- + Proprietary echo and noise cancellation with full-duplex performance
- + Adaptive modeling for any room acoustics and configurations
- + Flexibility to switch between built-in speaker and external speaker



## Key Highlights

- Brings the benefit of both traditional videoconferencing and cloud video collaboration
- Economical and multi-purpose design ensures highest return on investment
- Perfect for both single-site and multi-site interactive collaboration
- Ideal for all sizes of spaces, from huddle rooms to small and medium conference rooms



## Product Specifications

### System Includes\*:

- COLLABORATE Pro300 codec
- UNITE 150 PTZ camera
- CHAT 150C speakerphone
- Power supplies, cables and accessories
- Spontania Cloud Meeting room subscription (90 days)
- One-year support and maintenance with warranty

### COLLABORATE Pro 300 Codec Appliance

- Video inputs: 1x USB 3.0
- Video outputs: 1x HDMI, 1x Display port
- Audio inputs: USB (Digital audio)
- Audio outputs: USB, S/PDIF
- USB: 4x USB 3.0

### UNITE 150 PTZ Camera

- 12x Optical Zoom
- 73° wide-angle view
- USB 3.0
- Full HD 1080p 30fps
- Control: USB (UVC), RS-232
- Pan/Tilt Angles: ±170°, Tilt: -30° to +90°

### CHAT 150C Speakerphone

- ClearOne HDConference™ audio processing
- Three built-in microphone array with 360° pickup
- Large loudspeaker with Max Output Level: 85 dB SPL @ 1 meter
- Wideband audio frequency response (20Hz-20kHz)

### Video Characteristics

- Resolution up to 1080p @ 30 fps (Rx)
- H.261, H.263, H.263+/++
- H.264/AVC High Profile – up to 6Mbps
- H.264/SVC (Skype for Business)

### Audio Standards

- 20KHz: AAC-LD
- 14KHz: G.722.1 Annex C
- 7KHz: G.722, G.722.1
- 3.4KHz: G.711, G.723.1, G.728, G.729, AMR (3G)

### Data Characteristics

- H.239 support for data sharing
- Resolution up to 1080p
- Data inputs via wireless, datapoint (HDMI-to-USB adapter)

### Control

- Web-based management and control
- Telnet API for 3rd-party control
- AMX and Crestron modules

### Directory Services

- 1000+ local number directory
- 10,000+ global number directory
- H.350 support (thru COLLABORATE Central)
- LDAP online directory support,
- OpenLDAP
- Active Search and Filter queries

### Environments:

- Operating Temperature: 32° to 104° F (0° to 40 °C)  
\*At temps higher than 35°C, other environmental conditions may apply.

### Shipping Package:

- Dimension: 21 x 14.5 x 12 (inches)
- Weight: 13 lbs

### Part Number

- 930-3001-300

\* Skype for Business one-time activation license must be purchased

#### Headquarters

5225 Wiley Post Way  
Suite 500  
Salt Lake City, UT 84116

#### US & Canada

Tel: 801.975.7200  
TollFree: 800.945.7730  
Fax: 801.303.5711

#### International

Tel: +1.801.975.7200  
e-mail: global@clearone.com

#### Sales

Tel: 801.975.7200  
e-mail: sales@clearone.com

#### TechSupport

Tel: 801.974.3760  
e-mail: collaborate.support@clearone.com